



JIJAI ANGAN PHASE II

— Taloja, Ghot Village —

MahaRERA Registration No.: P52000026344

www.shubhamgroups.in



A PERFECT GATEWAY TO A **PERFECT LIFESTYLE** AWAITS YOU AT TALOJA

When luxury meets greenery, the experience is unique and magical. And Jijai Angan aims to bring this magic to you. Not just to your doorstep, but into your very homes. With this architectural marvel, Jijai Angan gives you seamless space within which you can plan your dream home just the way you like. And an exclusive view from your apartment is a dream come true to every home buyers.

WHY TALOJA

ACCESSIBILITY :

- Metro Station
- Kharghar Railway Station
- Talaja Railway Station
- Proposed International Airport
- Mumbai Pune Express way

BANKS :

- State Bank of India
- ICICI Bank
- Bank of India
- HDFC Bank
- IDBI Bank

SCHOOL & COLLEGES :

- Bhartiya Vidyapeeth
- NIFT
- Ryan International School
- A C Patil College of Eng.
- Podar Jumbo Kids
- 35 Educational Institutes within vicinity

MALLS & MARKETPLACES :

- Glomax Mall
- Littleworld Mall
- DMart
- Orion Mall

RECREATION :

- Gurudwara Guru Nanak Darbar
- Iskon Temple
- Central Park
- Golf Course
- Adlabs Imagica Theme Park

HOSPITALS :

- TATA Cancer Center
- MGM Hospital

REDEFINING THE **ART OF INDULGENCE...**

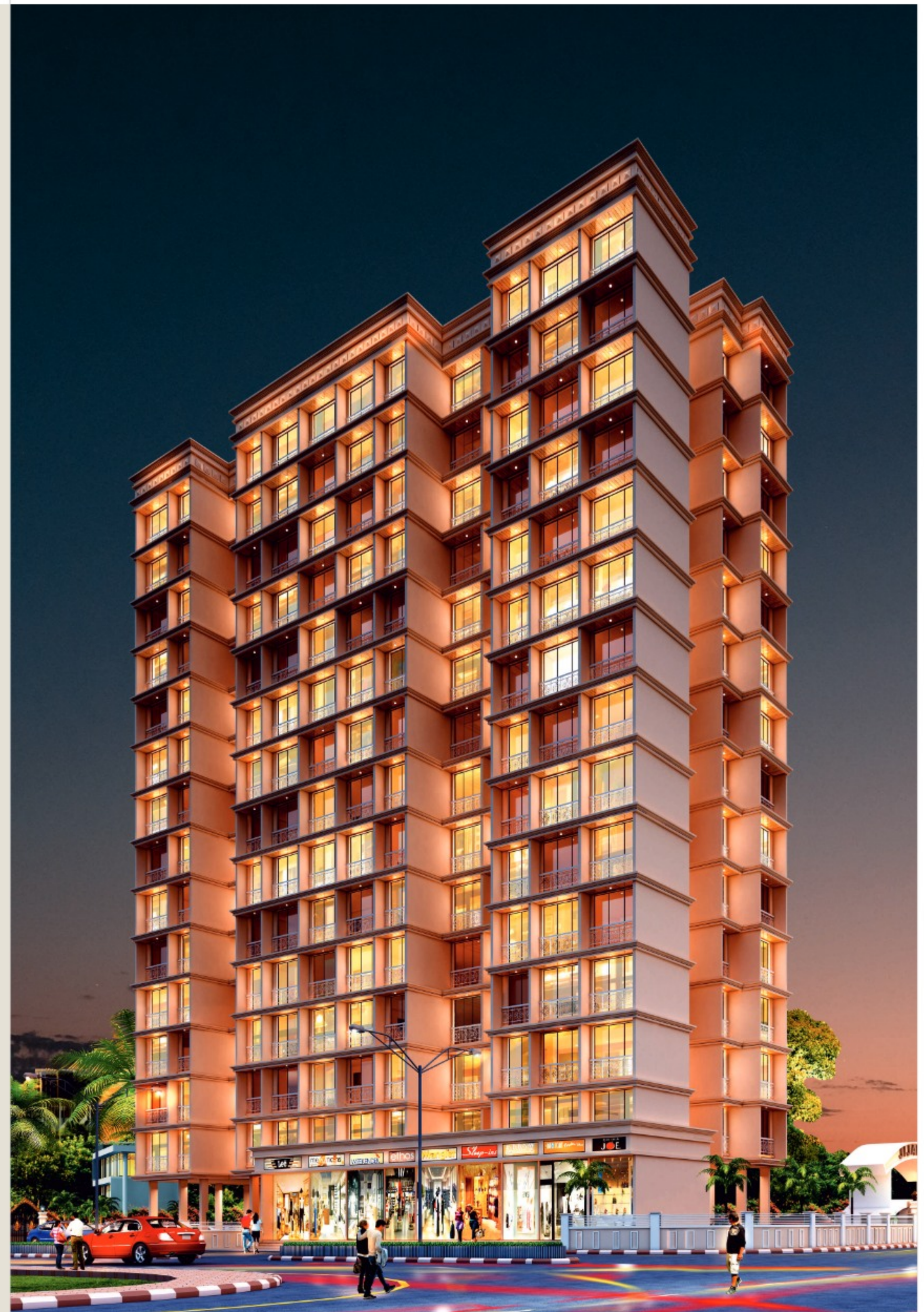
Jijai Angan - Phase II is complete with all modern amenities like proper ventilation of all rooms, 24-hour security arrangements with technologically advanced surveillance systems, fullproof fire protection systems and professionally managed maintenance services. An epitome of exquisite elegance and absolute comfort, it is your very own retreat of quietude and privacy in the most happening part of the city.

EXTERNAL AMENITIES :

- CCTV in Common area.
- Fire Fighting system for Whole Building.
- DG Backup for Lifts and Common Lighting.
- 24 Hrs. Water Supply.
- External Plaster Finished Walls.
- Drop-off Point for all E-Commerce Deliveries.
- Indoor Games room.
- Elegant Entrance Lobby.
- 24 Hrs Multi-level Security.
- Ample Parking Space.
- Landscape Garden - Children Play Area & Senior Citizen Area.

INTERNAL AMENITIES :

- Well Equipped Modular Kitchen.
- Italian Look Kitchen Top with Imported Sink, with Glazed tiles above Platform.
- 32*32 PGVT marbonite Flooring.
- Concealed Plumbing with branded Sanitary Fittings.
- Branded Concealed copper wiring & Branded Electrical Fittings.
- Main Decorated Entrance Door with branded Safety Lock.
- Internal Plaster on all internal wall with fine finishing.
- Aluminium powder coated sliding window with Mosquito Window Net.



DISCOVER A NEW
**WORLD OF
HAPPINESS...**



SWIMMING
POOL



CRECHE
FOR KIDS



FITNESS
CENTRE



SENIOR CITIZEN
CORNER



YOGA
CENTRE



SNOOKER
ROOM



KIDS PLAY
AREA



ISOMETRIC VIEW
2.5 BHK



ISOMETRIC VIEW
2 BHK



**2 BHK
VIRTUAL
TOUR**



ISOMETRIC VIEW
2 BHK



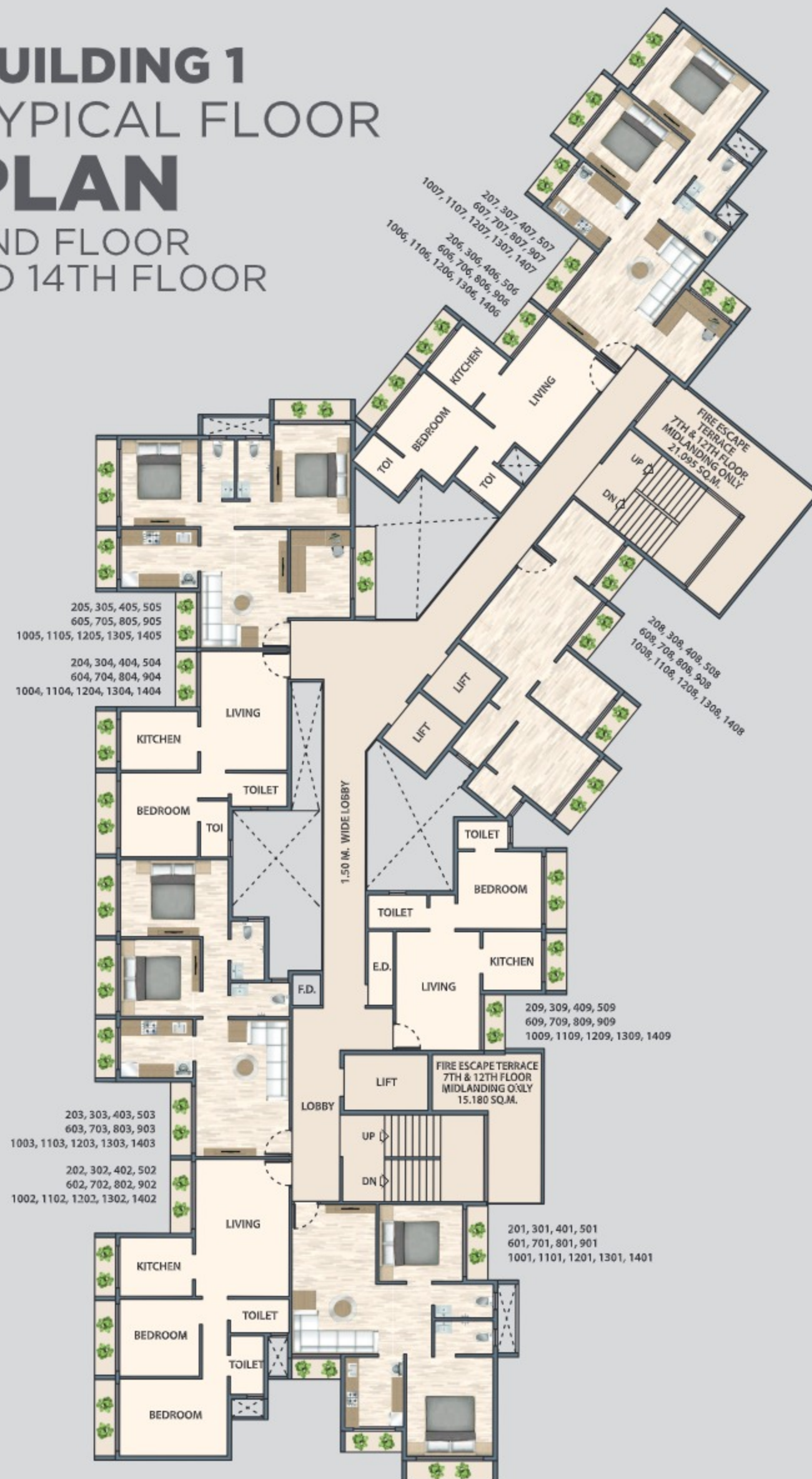
ISOMETRIC VIEW
1.5 BHK



ISOMETRIC VIEW
1 BHK

BUILDING 1 TYPICAL FLOOR PLAN

2ND FLOOR
TO 14TH FLOOR



OUR COMPLETED PROJECTS



JIJAI SPLENDOR
KARANJADE



JIJAI APARTMENT
TALOJA



JIJAI AWAS
PANVEL



JIJAI TULSI
PANVEL



JIJAI COMPLEX
TALOJA

AN ADDRESS THAT **CONNECTED TO THE WORLD...**

THE LOCATION

Not to scale



REGISTERED OFFICE : SHUBHAM GROUP - 707, Parth Solitaire, Plot No.-02, Sector-9E, Kalamboli, Navi Mumbai.

Mobile: +91 8422 9969 71/72, +91 73 898989 40

Email: sales@shubhamgroups.in

Design & Structural Architect :
TRIARCH DESIGN STUDIO
Mr. Hemant Dhavale

RCC Consultant :
M/S ADHARSHILA CONSULTANTS
Mr. Samarth Agarwal



MahaRERA Regn. No.:
P52000026344
www.maharera.maharashtra.gov.in

NOTE / DISCLAIMER

The information herein i.e., specifications, designs, dimensions etc. are subject to change without notification as may be required by the relevant authorities or the developer's, architect and cannot form part of an offer or contract, whilst every care is taken in providing this information. The owner, developer and manager cannot be held liable for variation. All illustrations & pictures are artist's impressions only. The items specified are subject to variations, modifications & substitution as may be recommended by the company's, architects / or relevant approving authorities.